

# SWITCH FABRIC 2.5 Seater

# akula

designed for life

|Product Code 45108|



## Dimensions



**Switch Fabric** is both an aesthetic and more functional sidestep than the Rope edition. The white frame makes the robust collection sparkle with lightness and elegance. With detachable, water-resistant covers and stackable seaters this collection is easily maintained with irresistible appeal.

**2.5 Seater** | A 2.5 seater sofa with removable panels and additional cushion

**Frame** | Powder coated aluminium frame

**Characteristics** | Light, Elegant

## Technical

**Weight** | 38.6kg / 85.09 lbs

**Volume** | 0.89m<sup>3/1</sup> (1 per box)

**Frame** | Powder coated aluminium wrapped in fabric

**Cushion** | Quick dry foam wrapped in fabric

**Lead Time from Stock** | 4-6 Weeks

**Custom Order Lead time** | 12 Weeks

## Colour Options

cushion set = 1x Seat + 2 x back + 2x deco cushions



removable washable panels



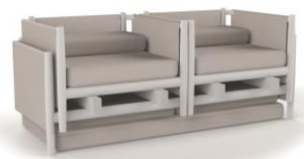
## Features



TRIPLE POWDER COATING



STACKABLE



HOSPITALITY GRADE



QUICK DRY SYSTEM



CUSHIONS INCLUDED



LOW MAINTENANCE



VELCRO FIXINGS

Designed by

# DIPHANO



5-Year Warranty



Competitive Pricing



Marine Grade Materials



Custom Design Options



Vertical Factory - Design to Delivery



History - 100 Years Experience



Stock Supported - 7,000+ Pieces